



## Employment Facts and Statistics

Office of Economic Opportunity  
Veterans Benefits Administration  
BLS Figures (non-seasonally adjusted)

### August-13

#### Unemployment

Cohort (% of total)	Rate	Change	Level	Change
<b>National</b>	<b>7.3%</b>	<b>-0.1%</b>	11.3M	-200,000
>27 Weeks			4.3M	100,000
<b>All Veterans (100%)</b>	<b>6.2%</b>	<b>-0.2%</b>	<b>671,000</b>	<b>-31,000</b>
Male	6.0%	-0.4%	566,000	-44,000
Female	7.7%	1.1%	105,000	13,000
<b>Post-9/11 Veterans (34%)</b>	<b>10.0%</b>	<b>2.3%</b>	<b>226,000</b>	<b>60,000</b>
Male	9.9%	2.2%	183,000	45,000
Female	10.3%	2.6%	43,000	16,000
<b>18-24 Veterans* (4%)</b>	<b>18.4%</b>	<b>1.0%</b>	<b>29,000</b>	<b>1,000</b>
Male	22.4%	2.0%	24,000	0
Female**	9.8%	1.5%	5,000	2,000
<b>25-34 Veterans (22%)</b>	<b>10.7%</b>	<b>3.9%</b>	<b>147,000</b>	<b>54,000</b>
Male	10.2%	3.6%	112,000	38,000
Female	12.4%	4.6%	34,000	16,000
<b>35-44 Veterans (18%)</b>	<b>6.1%</b>	<b>-0.3%</b>	<b>120,000</b>	<b>-13,000</b>
Male	5.6%	-0.5%	94,000	-10,000
Female	8.9%	1.1%	26,000	-4,000
<b>45-54 Veterans (20%)</b>	<b>4.7%</b>	<b>-1.0%</b>	<b>133,000</b>	<b>-29,000</b>
Male	4.3%	-1.1%	103,000	-28,000
Female	7.1%	-0.4%	30,000	-1,000
<b>55+ Veterans (36%)</b>	<b>5.4%</b>	<b>-1.0%</b>	<b>242,000</b>	<b>-45,000</b>
Male	5.6%	-1.1%	232,000	-45,000
Female	2.9%	-0.1%	9,000	-1,000

\* 3,000 enrolled in school (10% of all unemployed 18-24)

\*\* Does not meet BLS publication criteria

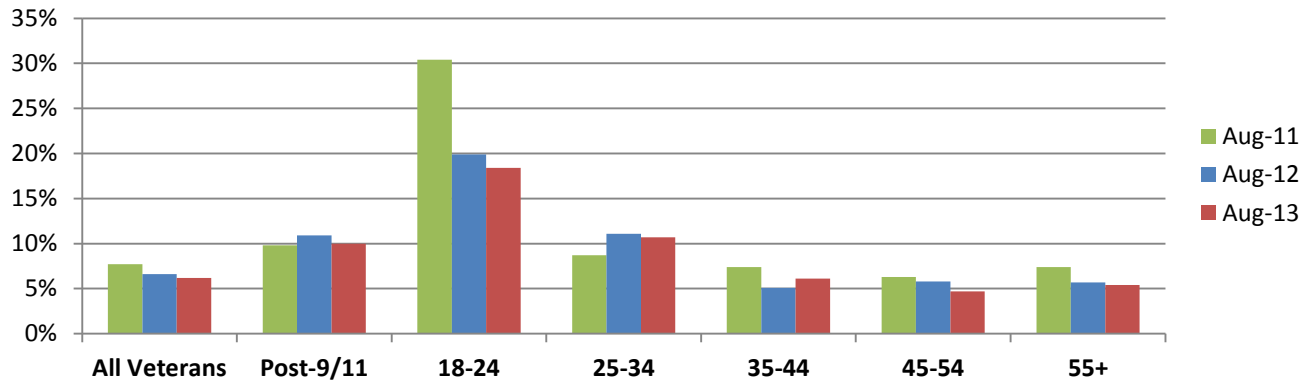
#### Unemployed by State Data

Highest Levels (32% of total)	Level	Highest Rates	Rate
California	69,000	Mississippi	17.5%
Florida	63,000	New Mexico	14.9%
New York	45,000	Nevada	13.2%
Texas	39,000	New York	12.0%
Pennsylvania	29,000	Michigan	9.3%

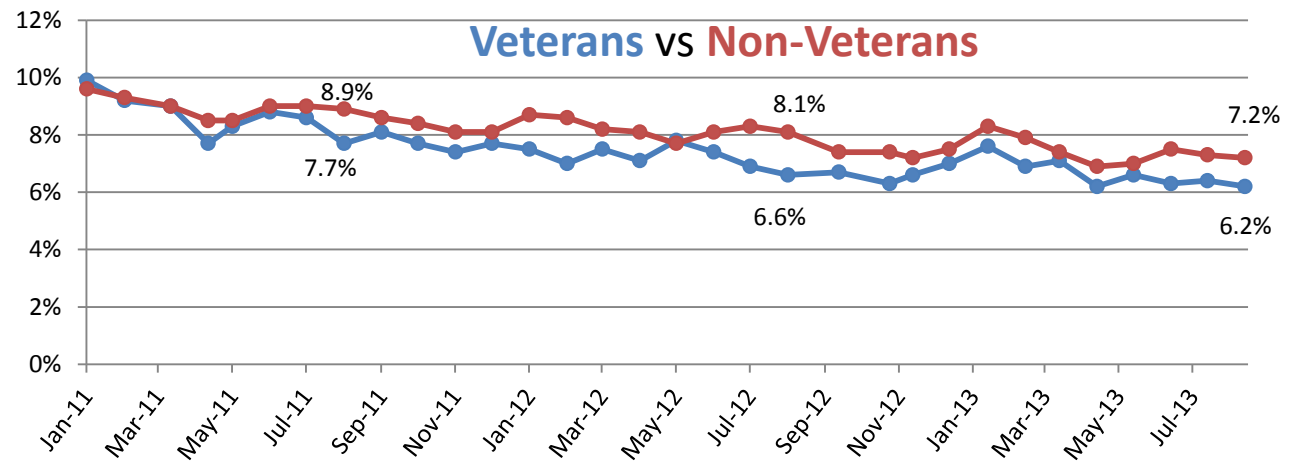
#### Employment Sector

Sector	+/-	Sector	+/-
Retail	44,000	Wholesale Trade	8,000
Healthcare	33,000	Manufacturing	Even
Professional/Business	23,000	Transportation/Warehousing	Even
Leisure/Hospitality	21,000	Construction	Even
Financial	15,000	Government	Even

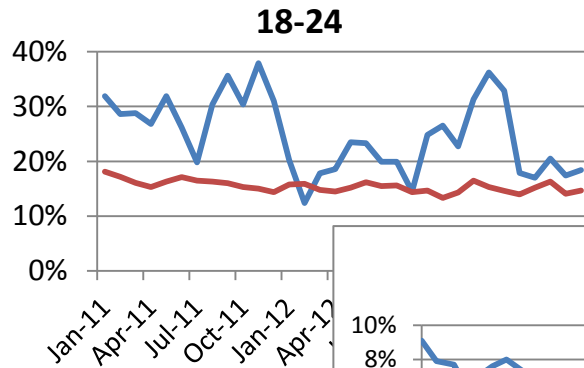
## Year-Over-Year Comparison



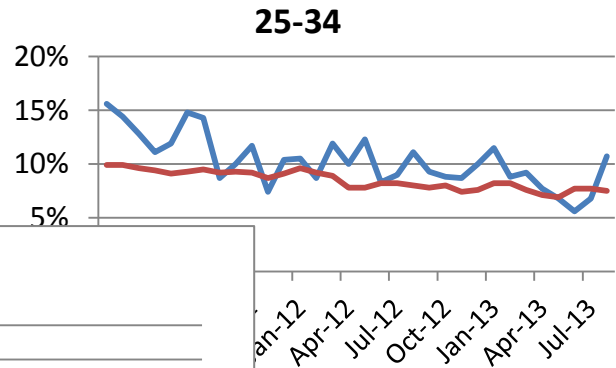
## Veterans vs Non-Veterans



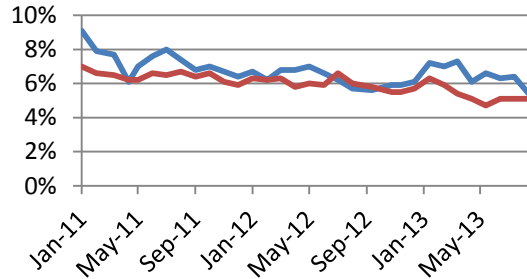
### Vets / Non-Vets



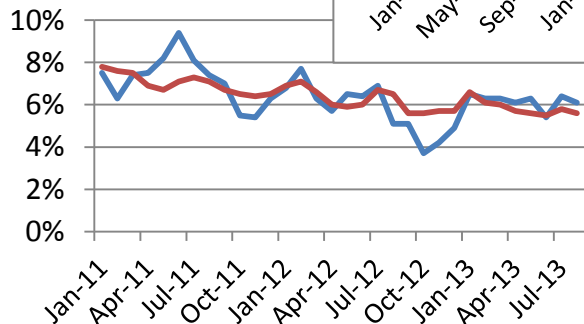
### Vets / Non-Vets



### 55+



### 35-44



### 45-54

